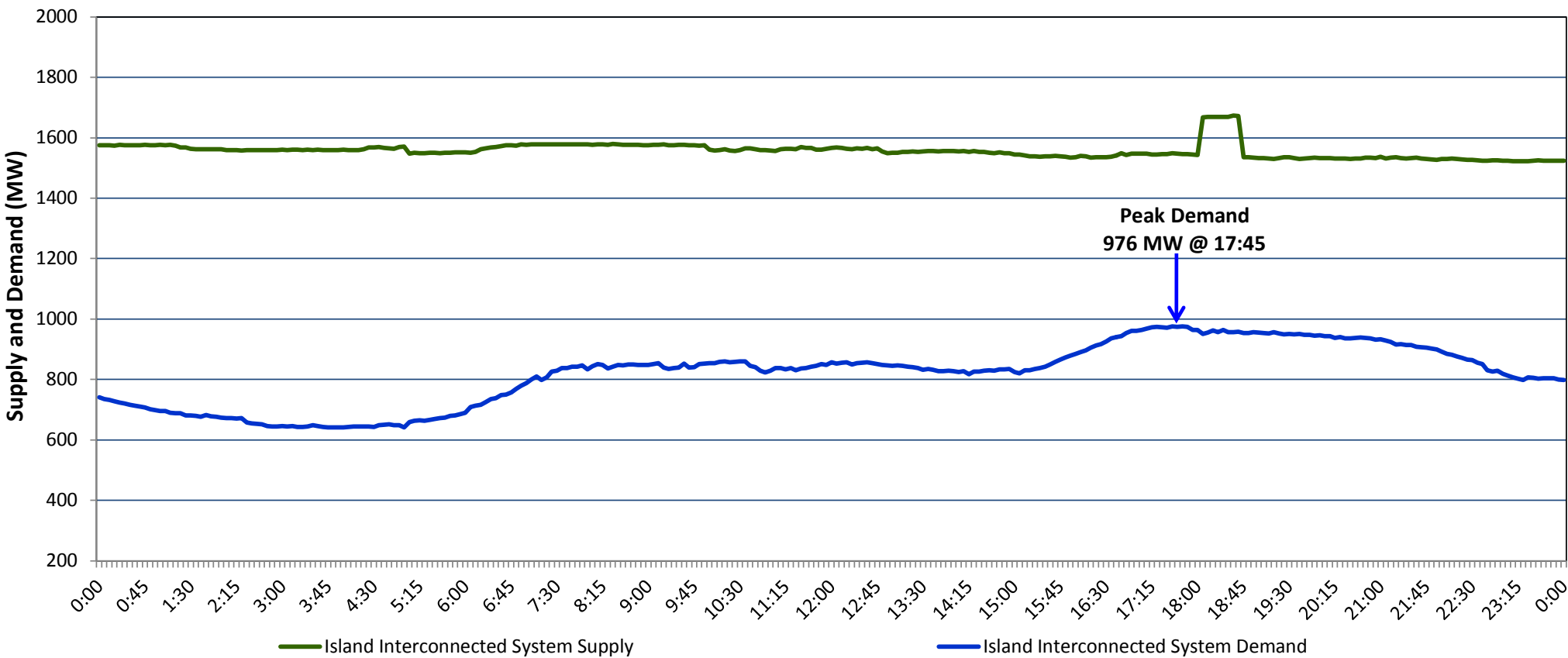


Newfoundland Labrador Hydro (NLH)
Supply and Demand Status Report Filed Wednesday, November 08, 2017

Section 1
Island Interconnected System Supply and Demand
Actual 24 Hour System Performance For Tuesday, November 07, 2017



Supply Notes For November 07, 2017

- 1,2
- A

As of 0652 hours, October 30, 2017, Hinds Lake Unit unavailable due to planned outage (75 MW).
- B

As of 1510 hours, November 04, 2017, Bay d'Espoir Unit 1 unavailable (76.5 MW).
- C

As of 1510 hours, November 04, 2017, Bay d'Espoir Unit 2 unavailable (76.5 MW).
- D

As of 1800 hours, November 04, 2017, Holyrood Unit 2 available at 150 MW (170 MW).
- E

As of 1800 hours, November 06, 2017, Stephenville Gas Turbine unavailable 25 MW (50 MW).
- F

At 1246 hours, November 07, 2017, Paradise River Unit unavailable due to planned outage (8 MW).
- G

At 1410 hours, November 07, 2017, St. Anthony Diesel Plant available at full capacity (9.7 MW).
- H

At 1603 hours, November 07, 2017, Paradise River Unit available (8 MW).
- I

At 1808 hours, November 07, 2017, Holyrood Combustion Turbine available (123.5 MW).
- J

At 1848 hours, November 07, 2017, Holyrood Unit 1 unavailable due to planned outage 135 MW (170 MW).

Section 2
Island Interconnected Supply and Demand

Wed, Nov 08, 2017 Island System Outlook ³			Seven-Day Forecast		Temperature (°C)		Island System Daily Peak Demand (MW)	
					Morning	Evening	Forecast	Adjusted ⁷
Available Island System Supply: ⁵	1,510	MW	Wednesday, November 08, 2017		2	2	1,180	1,086
NLH Generation: ⁴	1,225	MW	Thursday, November 09, 2017		4	5	1,220	1,126
NLH Power Purchases: ⁶	90	MW	Friday, November 10, 2017		6	6	1,120	1,027
Other Island Generation:	195	MW	Saturday, November 11, 2017		6	3	1,235	1,141
Current St. John's Temperature:	2	°C	Sunday, November 12, 2017		4	2	1,200	1,106
Current St. John's Windchill:	N/A	°C	Monday, November 13, 2017		1	1	1,250	1,155
7-Day Island Peak Demand Forecast:	1,250	MW	Tuesday, November 14, 2017		3	3	1,195	1,101

Supply Notes For November 08, 2017

- 3
- Notes:
1.

Generation outages for running and corrective maintenance are included. These are not unusual for power system operations. They generally do not impact customer supply. The power system operators schedule outages to system equipment whenever possible to coincide with periods when customer demands are low and sufficient supply reserves are available. However, from time to time equipment outages are necessary and reserves may be impacted.
2.

Due to the Island Interconnected System being isolated from the larger North American grid, when there is a sudden loss of large generating units some customer's load must be interrupted for short periods to bring generation output equal to customer demand. This automatic action of power system protection, referred to as under frequency load shedding, is necessary to ensure the integrity and reliability of system equipment. Under frequency events typically occur 5 to 8 times per year on the Island Interconnected System and the resultant customer load interruptions are generally less than 30 minutes.
3.

As of 0800 Hours.
4.

Gross output including station service at Holyrood (24.5 MW) and improved NLH hydraulic output due to water levels (35 MW).
5.

Gross output from all Island sources (including Note 4).
6.

NLH Power Purchases include: CBPP Co-Gen, Nalcor Exploits, Rattle Brook, Star Lake, Vale capacity assistance (when applicable), and Wind Generation.
7.

Adjusted for CBP&P interruptible load and the impact of voltage reduction, when applicable.

Section 3
Island Peak Demand Information
Previous Day Actual Peak and Current Day Forecast Peak

Tue, Nov 07, 2017	Actual Island Peak Demand ⁸	17:45	976 MW
Wed, Nov 08, 2017	Forecast Island Peak Demand		1,180 MW

- Notes:
8.

Island Demand is supplied by NLH generation and purchases, plus generation owned and operated by Newfoundland Power and Corner Brook Pulp & Paper (Deer Lake Power, DLP).